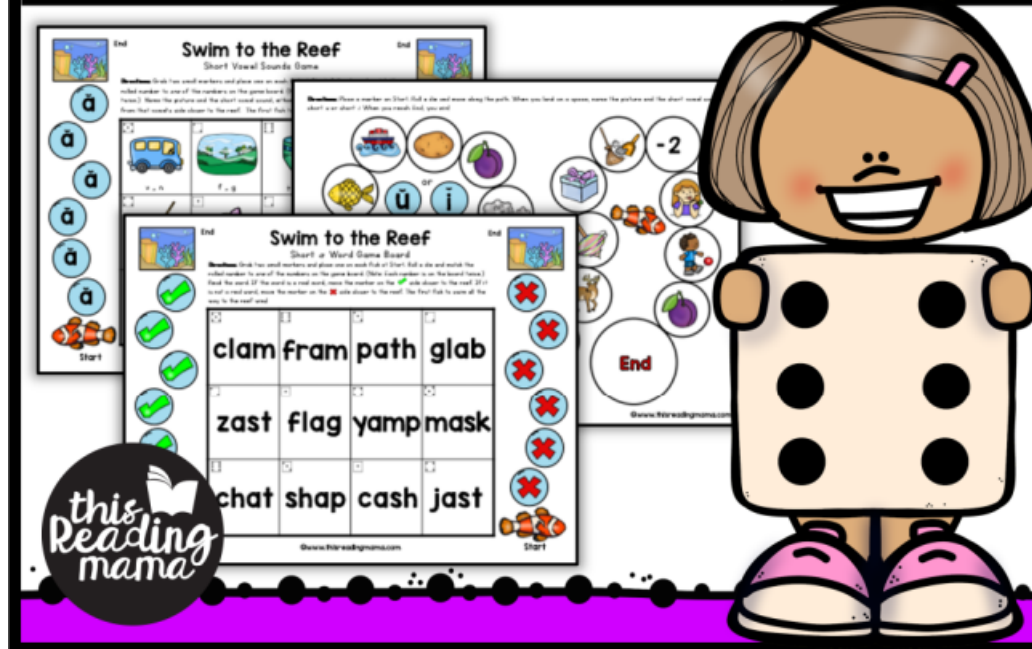


print & play games

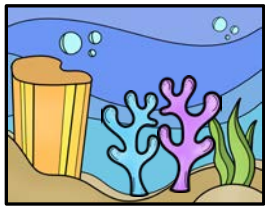
SHORT VOWELS

Color Games * Blackline Games * Digital Games



preview

©www.thisreadingmama.com

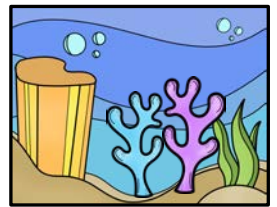


End

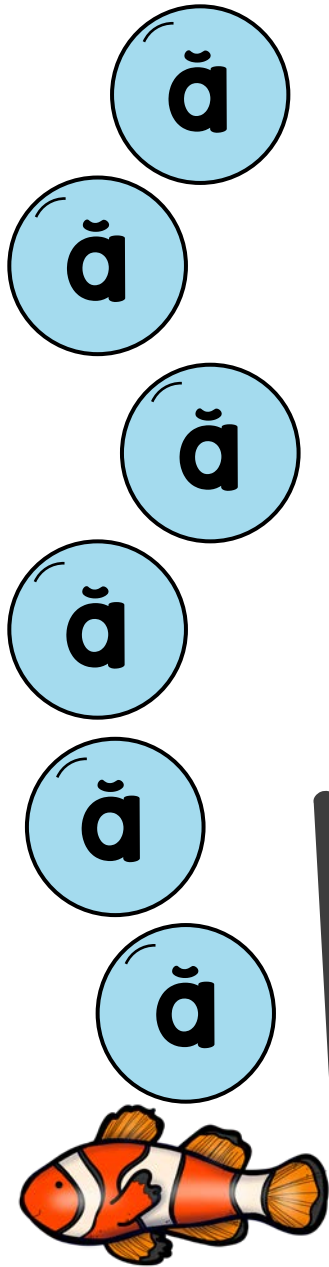
Swim to the Reef

Short *a* Game Board




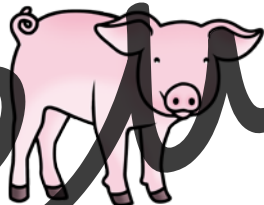








Directions: Grab two small markers and place one on each fish at Start. Roll a die and match the rolled number to *one* of the numbers on the game board. (Note: Each number is on the board twice.) Name the picture and listen for the vowel sound in the middle of the word. If the word has a short *a* sound, move the marker on the "a" side closer to the reef. If it does not have a short *a* sound, move the marker on "not a" side closer to the reef. The first fish to swim all the way to the reef wins!



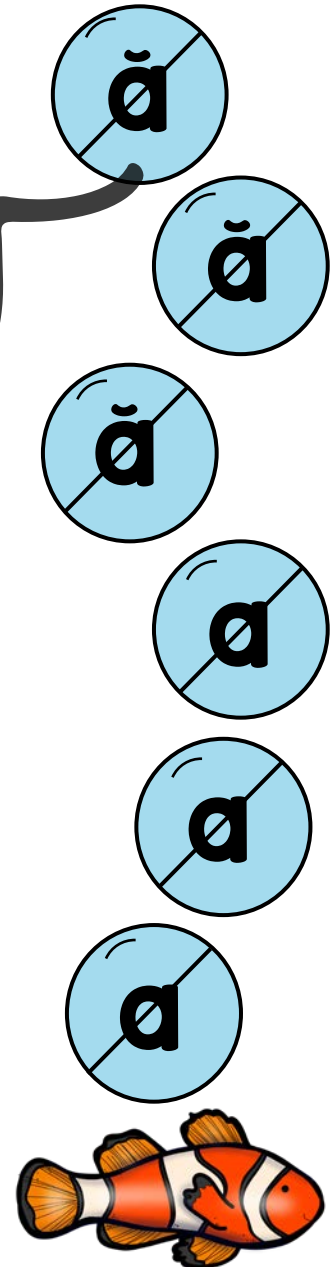
End



Start

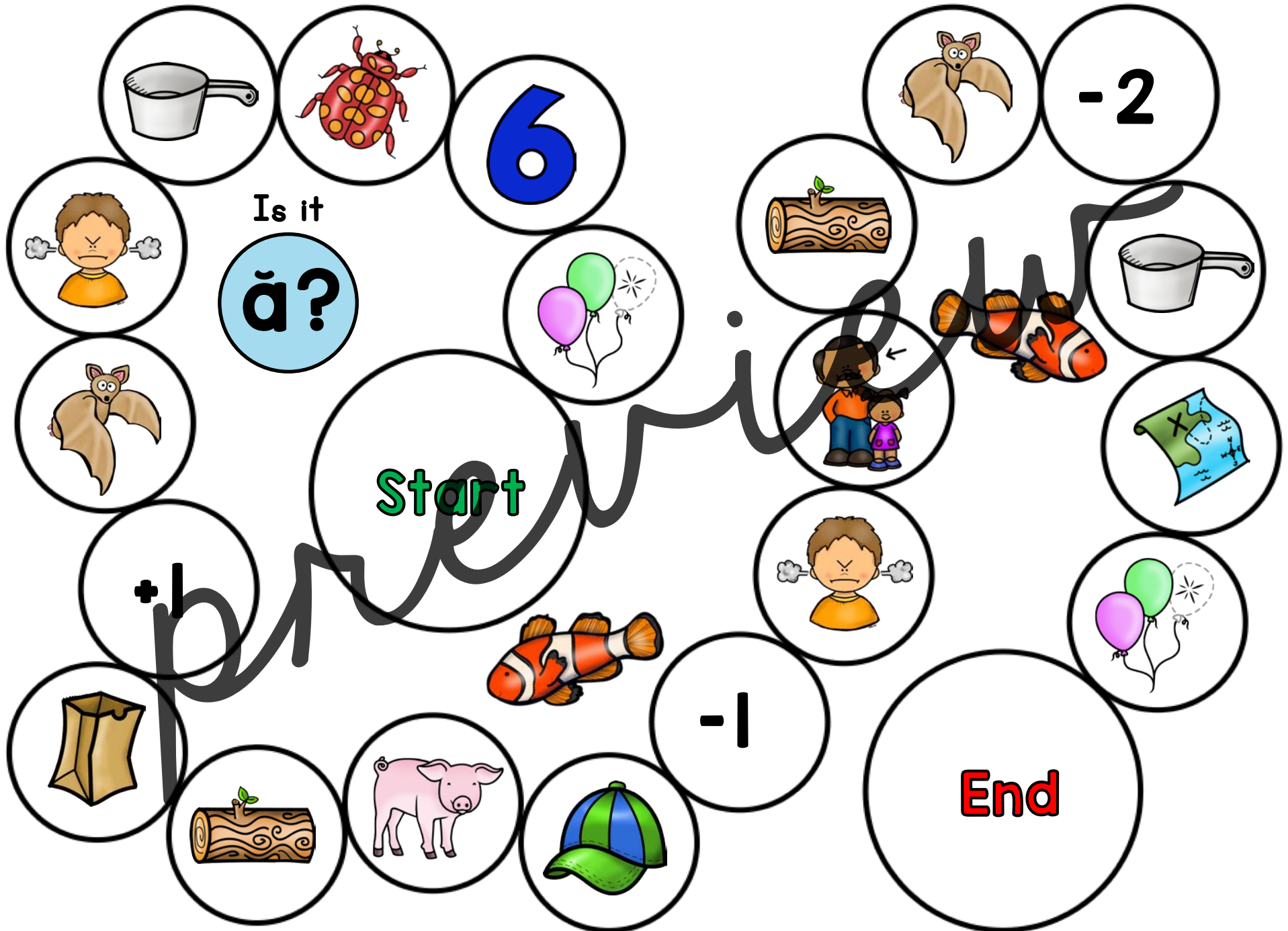
 b _ t	 p _ p	 b _ g	 p _ g
 m _ p	 b _ g	 l _ g	 m _ d
 s _ x	 d _ d	 c _ p	 p _ t

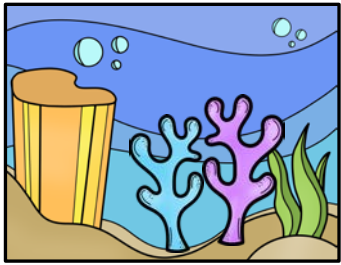
©www.thisreadingmama.com



Start

Directions: Place a marker on Start. Roll a die and move along the path. When you land on a space, name the picture and tell if it has the short *a* sound in the middle of the word or not. When you reach End, you win!



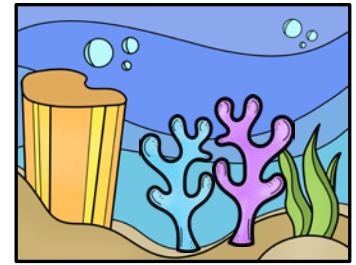


End

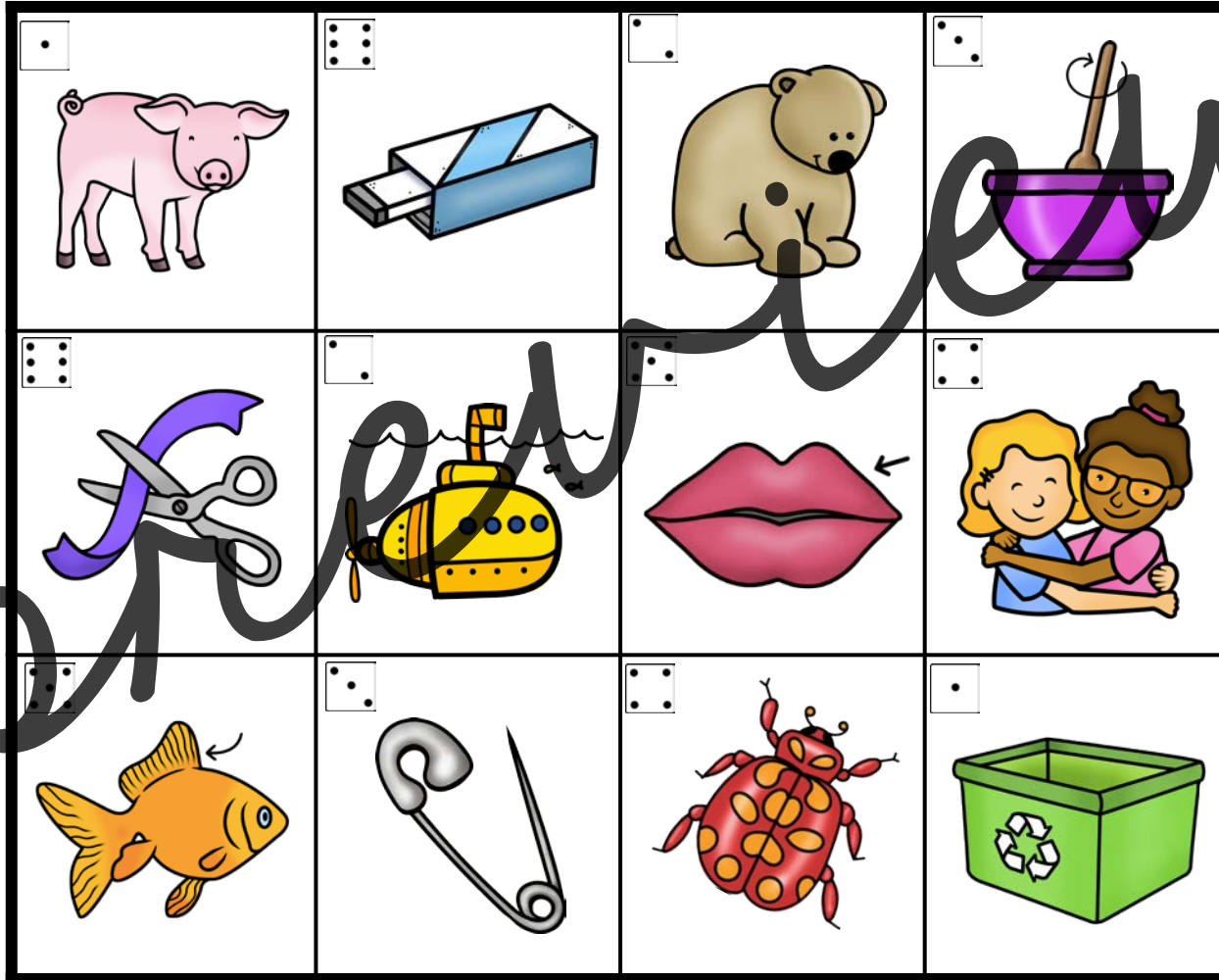
Swim to the Reef

Short Vowel Sounds Game

Directions: Roll a die and match the rolled number to *one* of the numbers on the game board. (Note: Each number is on the board twice.) Name the picture. If it is a short *u* word, spell the word on the bottom line of the short *u* side. If it is a short *i* word, spell the word on the short *i* side. Keep rolling and spelling words. *The same word may not be spelled more than twice.* The first fish to swim all the way to the reef wins!



End



u



Start

©www.thisreadingmama.com

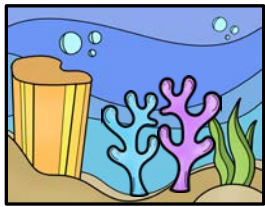


i

Start

Directions: Place a marker on Start. Roll a die and move along the path. When you land on a space, name the picture and the short vowel sound: short *u* or short *i*. When you reach End, you win!



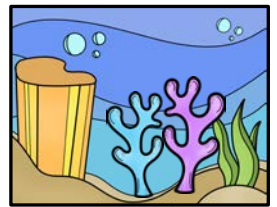


End

Swim to the Reef

Short Vowel Sounds Game

Directions: Grab two small markers and place one on each fish at Start. Roll a die and match the rolled number to *one* of the numbers on the game board. (Note: Each number is on the board twice.) Name the picture and short vowel sound you hear in the word. Move the marker from that vowel's side closer to the reef. The first fish to swim all the way to the reef wins!



End

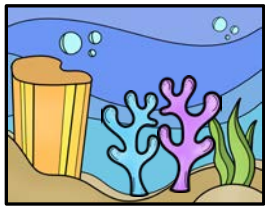
 m _ s s	 s h _ p	 n _ s t	 s t _ m
 s t _ p	 r _ c k	 s h _ l l	 l _ c k
 s l _ t	 s p _ t	 n _ c k	 k n _ b

Start

Start

Directions: Place a marker on Start. Roll a die and move along the path. When you land on a space, name the picture and the short vowel sound: short e or short o. When you reach End, you win!





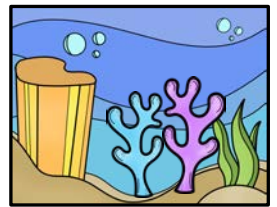


End




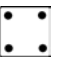
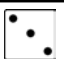
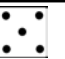



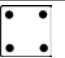

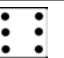
Swim to the Reef

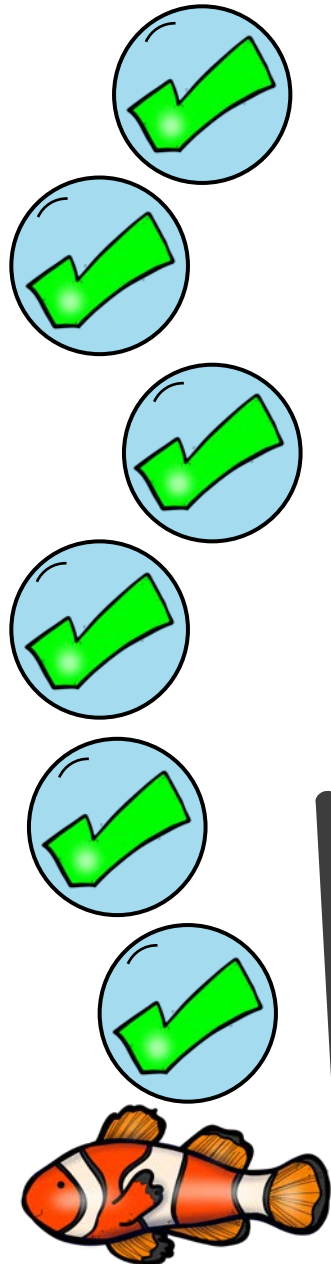
Short *a* Word Game Board

Directions: Grab two small markers and place one on each fish at Start. Roll a die and match the rolled number to *one* of the numbers on the game board. (Note: Each number is on the board twice.) Read the word. If the word is a real word, move the marker on the  side closer to the reef. If it is not a real word, move the marker on the  side closer to the reef. The first fish to swim all the way to the reef wins!

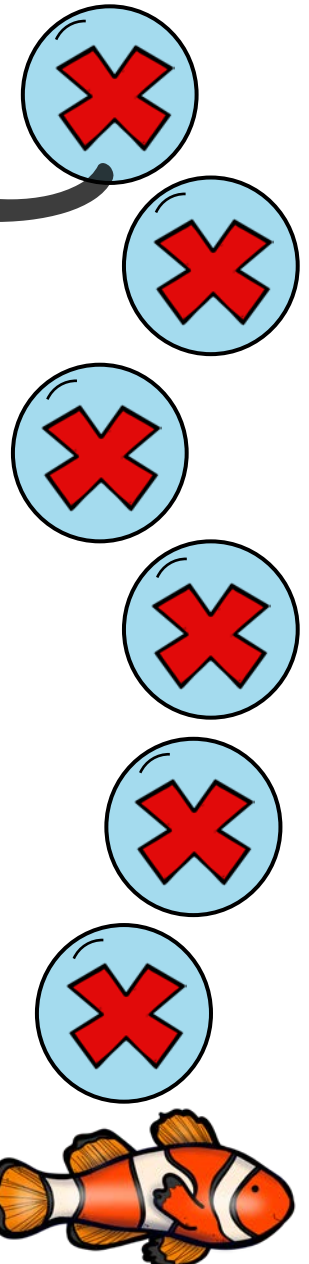


End

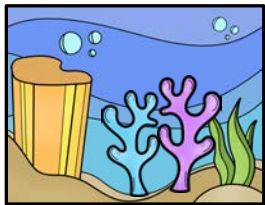
 grat	 lamp	 plam	 drag
 land	 stad	 zack	 grab
 jash	 cast	 plan	 clab



Start





Start

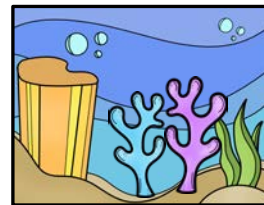


End

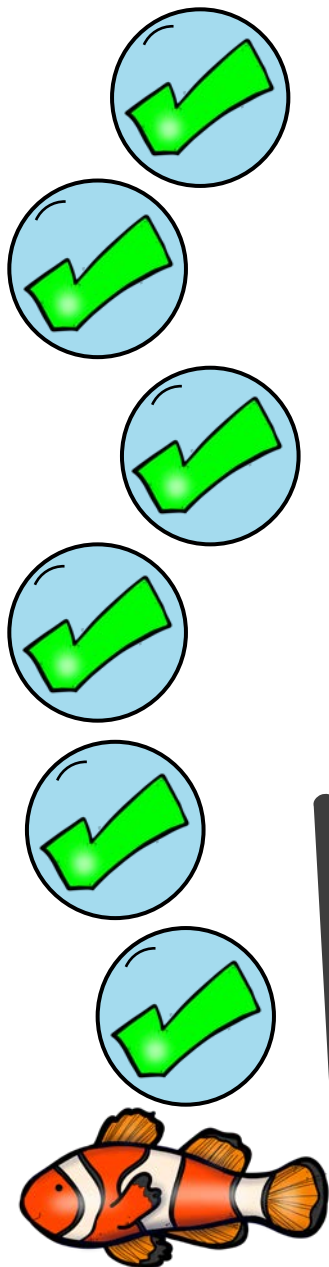
Swim to the Reef

Short e Word Game Board


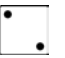
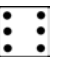

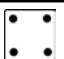




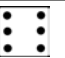
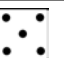
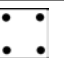
Directions: Grab two small markers and place one on each fish at Start. Roll a die and match the rolled number to *one* of the numbers on the game board. (Note: Each number is on the board twice.) Read the word. If the word is a real word, move the marker on the  side closer to the reef. If it is not a real word, move the marker on the  side closer to the reef. The first fish to swim all the way to the reef wins!

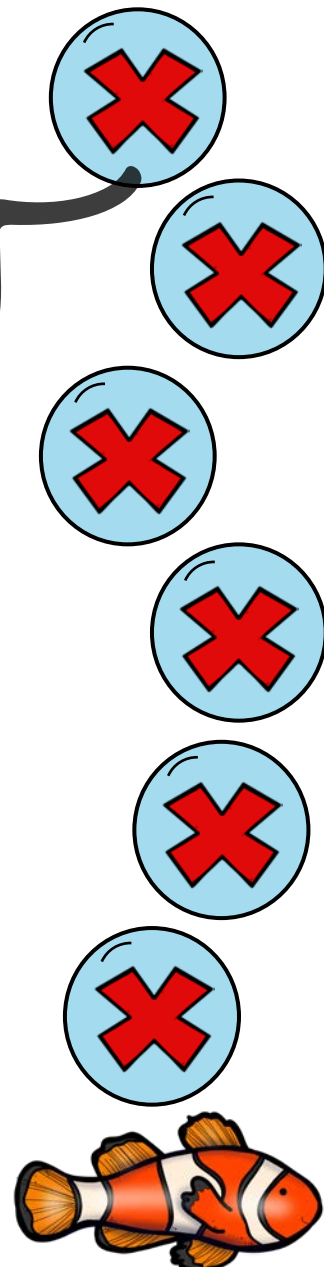


End



Start

 sne <u>d</u>	 ste <u>m</u>	 bre <u>g</u>	 fle <u>d</u>
 ble <u>p</u>	 he <u>l</u> d	 de <u>s</u> k	 she <u>g</u>
 be <u>l</u> t	 ze <u>x</u> t	 the <u>b</u>	 fre <u>t</u>



Start