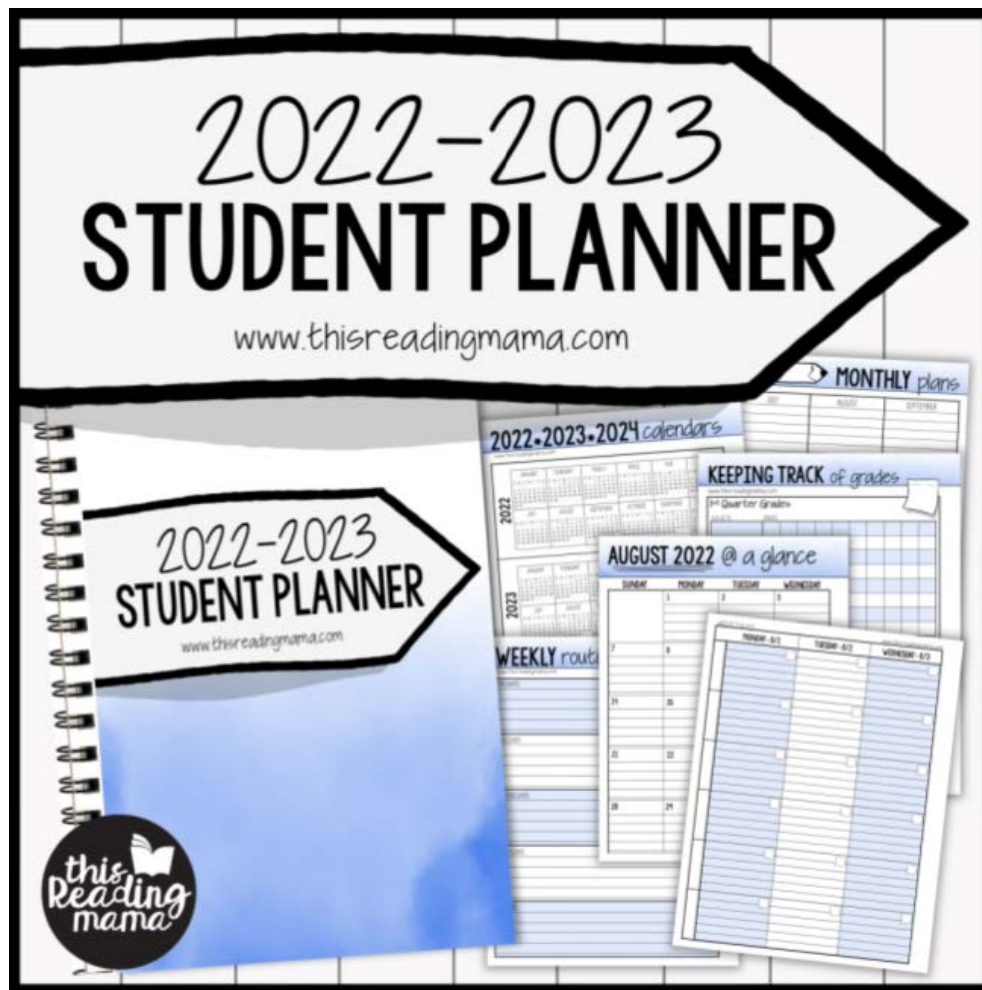


# Thank you for buying our 2022-2023 STUDENT PLANNER

This file is a "How to" resource for prepping & printing your student planner. Please read carefully before printing anything!



[www.thisreadingmama.com](http://www.thisreadingmama.com)

**Terms of Use:** Our student planner was created for you to use at home with your own child(ren) or with kids in your own classroom. Please **do not** share this PDF with others, sell, host, reproduce, giveaway, or store on any other site (including a blog, Facebook, 4Shared, Dropbox, Amazon Inspire, etc.). Thank you!

# TABLE OF CONTENTS:

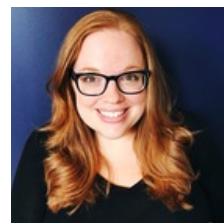
[www.thisreadingmama.com](http://www.thisreadingmama.com)

- p. 3 Permission Letter for use at a print & copy shop  
(Some shops require this, so be sure to print it off and take it with you to the store.)
- p. 4 How to Use the Editable Pages
- p. 5 3 Options for Printing- Be sure to read these pages CAREFULLY, especially before you print from home!
- p. 7 Student Planner Tabs {optional}

\*Note: This planner was designed specifically for middle school and high school students who are ready to take on more responsibility with their schoolwork.

Although it may work for students IN school, it was designed specifically for my middle and high school homeschool students.

## FONTS & CLIP ART BY:



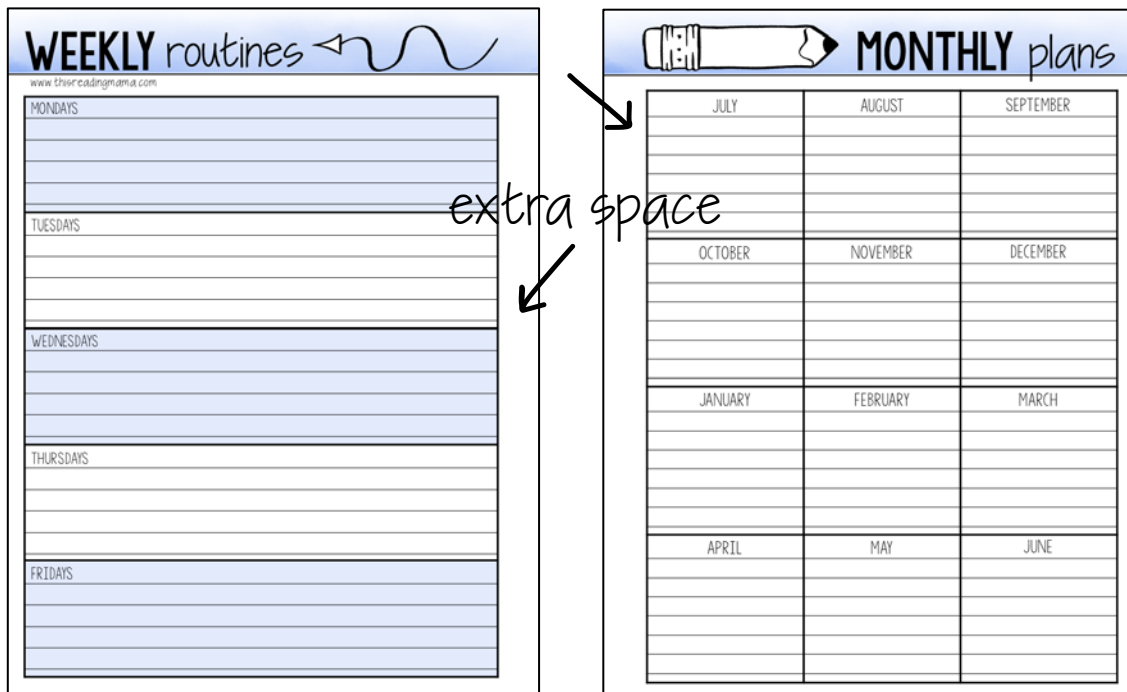
# this Reading mama

To Whom it May Concern:

This customer has purchased a student planner from my shop and has permission from me, Becky Spence, to print it at your location.

The pages have been arranged in order so they can be printed front to back from start to finish. I recommend printing onto a thicker paper, so the ink will not bleed through on the pages.

Please Note: Extra space has been included on the inside margins of each page, so they can more easily be bound without covering up the print on the pages.



Thank you,

Becky Spence of [www.thisreadingmama.com](http://www.thisreadingmama.com)  
Email questions to: [becky@thisreadingmama.com](mailto:becky@thisreadingmama.com)

# HOW TO USE the editable pages

Note: The six subjects are editable in the entire file. Homeschool subjects will autofill for July 2022–December 2022 when typed into any of those months. Homeschool subjects will autofill for January 2023–June 2023 when typed into any of those months. They are intentionally split this way to make room for semester-long classes (instead of year-long classes).

Follow these directions for the editable subjects:

1. Download and install [this free font](#) from Kimberly Geswein on TpT if you want to use the same fonts found in the rest of the planner. *You will only need the chubby font from the file, but feel free to download both to your computer.*
2. Open the PDF document with the most recent version of Adobe Reader. It is available [here](#). An older version may work just fine for you, but if you are having trouble, it might be that you need the most recent version.
3. Download and save the PDF of the planner to your computer. Use that file to make your edits. If you try to type your text before you download the file, you may not be able to see the editable fields or be able to type.
4. Click on and type your text in the blue/gray boxes in each space. If you do not type words in the boxes, your pages will print blank. If you do not see any blue/gray boxes, begin typing in these six areas and your text should fill in.
5. Save your work and print later or print your plans right away.

## \*Troubleshooting Ideas for Mac Users!

1. Make sure that you have the most current version of Adobe Reader. It is available [here](#).
2. Open your file finder and right click (or double click) on the file in your download folder.
3. Choose OPEN WITH -> ADOBE READER.
4. You may be prompted to choose Adobe Reader as your PDF reader in the future. To avoid problems in the future, click YES.

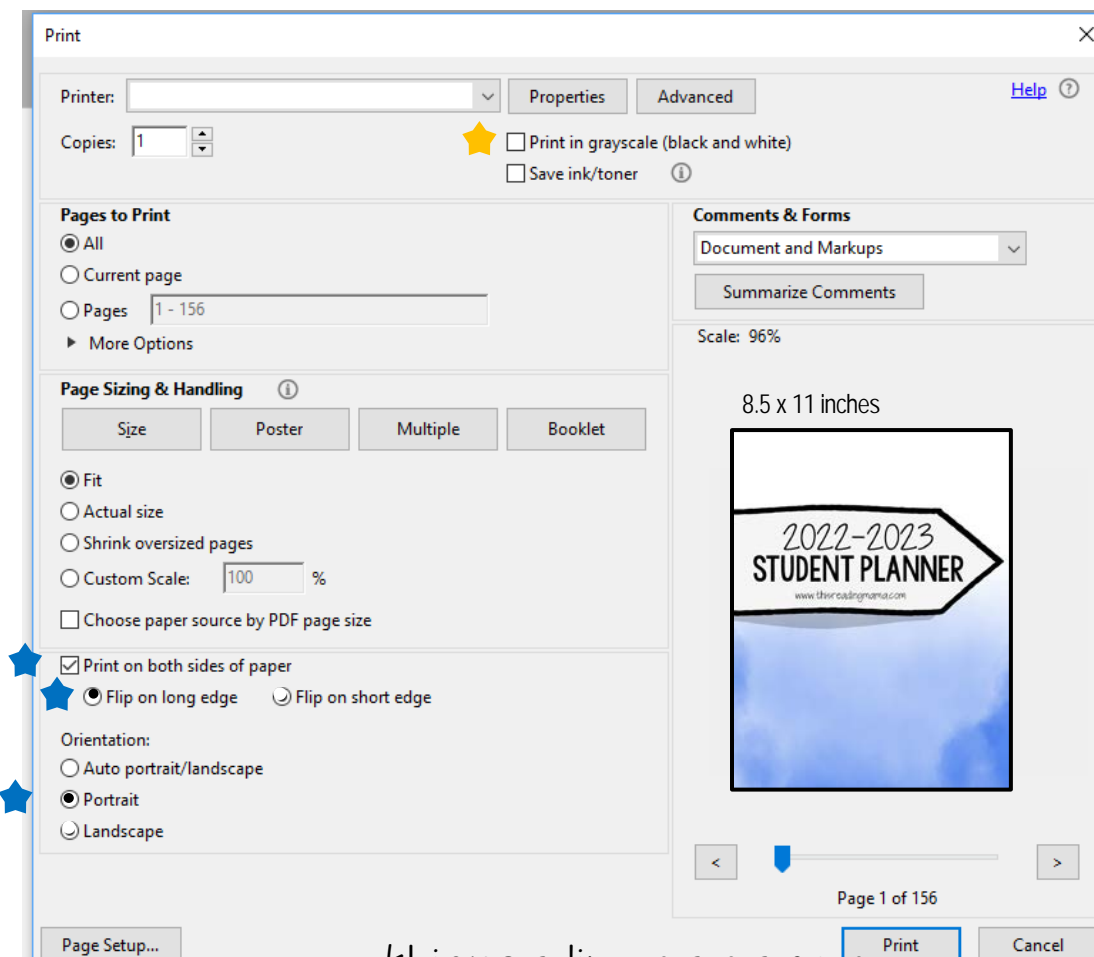
# 3 OPTIONS FOR PRINTING

1- Print the planner at a print & copy shop and get it spiral-bound. Some print shops require a permission letter, so you may need to print and take along the letter on page 3 of this file. Be sure to specify if you want the color planner or black/white planner.

2. Print the pages front to back from home.

Once you open with Adobe Reader, go to "File," and select "Print." You will see a screen like the image below.

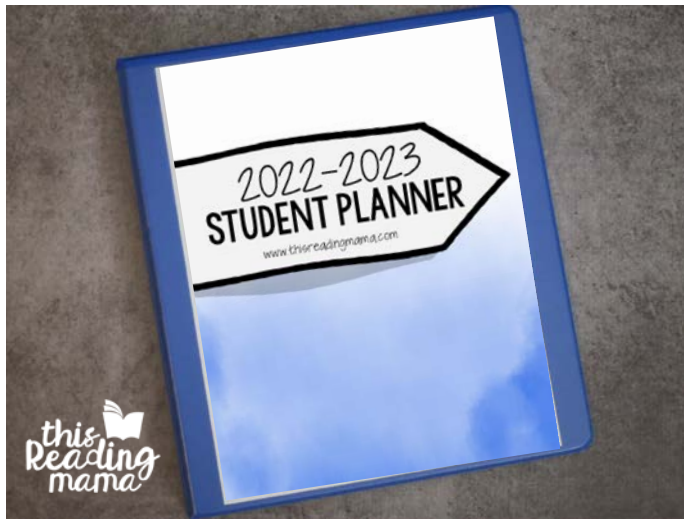
Check the box beside "Print on both sides of paper." then click "flip on long edge." {See the blue stars below.} If you do not change these settings first, your planner will not print correctly. If you want to print grayscale, click the box beside the yellow star. You can also print black/white from the black/white file.





## 2. Print the pages front to back from home continued...

Hole-punch your pages and put them in a 3-ring binder as seen in the images below. The nice part about using a binder is that learners can slip important papers in the pockets or use plastic sleeve protectors.



## 3. Just print the pages from home that you want.

If you don't want or need all the pages from the planner, only print what you want! Once you open with Adobe Reader, go to "File," and select "Print."

### TWO IMPORTANT NOTES ABOUT PRINTING THIS WAY:

1. If you want to print the pages front to back, be sure to follow the directions on page 5 of this file.
2. Be sure to pay attention to which pages go together so your pages look right when you print them. Extra space has been added to the inside margins of all pages so that when you hole-punch them, the holes aren't covering so much of the space you need to write in.

# STUDENT PLANNER TABS

*Optional:* Learners can add tabs to their pages to help them quickly find what they need. I recommend printing them on cardstock, laminating, cutting them out, and taping each tab to your pages.

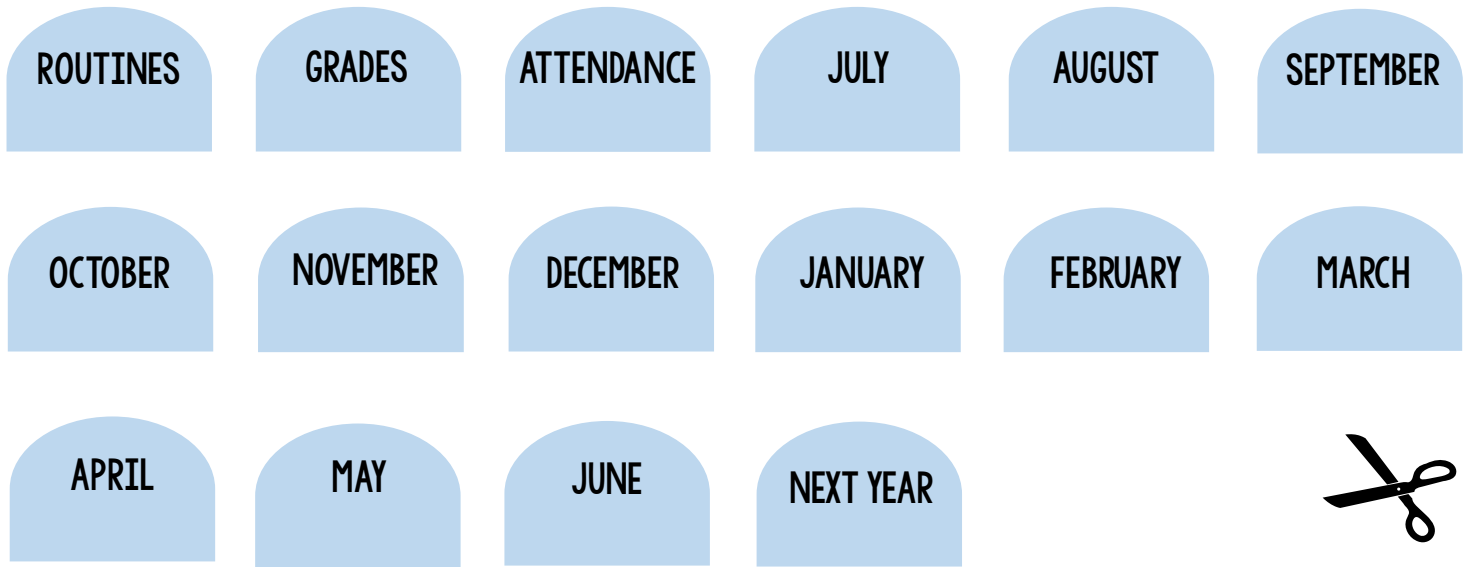
To prep your tabs, follow these steps:

- Print the tabs onto cardstock. {If you're using the blackline tabs, you can print them onto different colored paper to make them "pop."}
- Laminate tabs for durability.
- Cut out each tab.
- Tape or glue the tabs into your planner, as seen in the image below, to help learners easily locate sections of their planner.

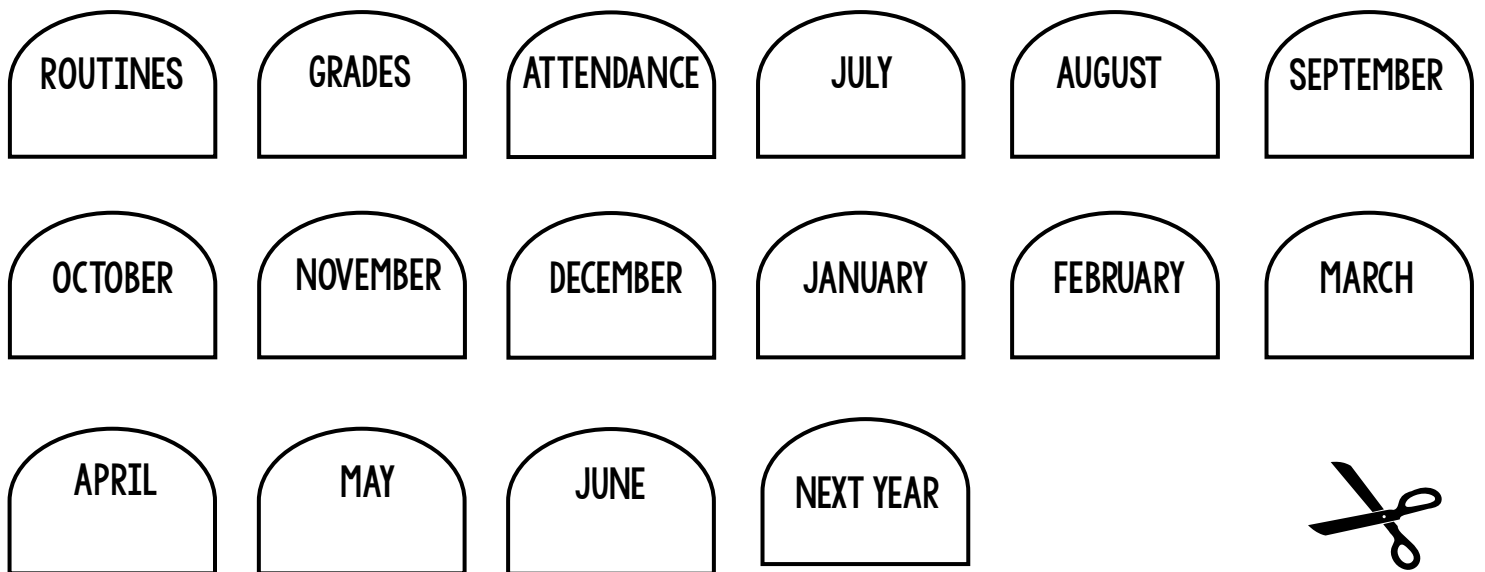
The image shows a student planner page. At the top, there is a blue header with a pencil icon and the text "MONTHLY plans". Below the header is a grid of months: JULY, AUGUST, SEPTEMBER, OCTOBER, NOVEMBER, DECEMBER, JANUARY, FEBRUARY, MARCH, APRIL, MAY, and JUNE. Each month has three rows for planning. A blue tab labeled "ROUTINES" is attached to the right side of the grid, and an arrow points to it.

JULY	AUGUST	SEPTEMBER
OCTOBER	NOVEMBER	DECEMBER
JANUARY	FEBRUARY	MARCH
APRIL	MAY	JUNE

# COLOR PLANNER TABS



# BLACKLINE PLANNER TABS





# HOMESCHOOL RESOURCES

Find homeschooling encouragement, tips, tricks, and curricula ideas right on my blog!

<https://thisreadingmama.com/homeschooling-resources-tips/>

